

The information contained within this document is accurate at the date specified and is subject to change. Please view the listing online for the most up-to-date information.

## 1120 MOUNTAIN VIEW AVENUE

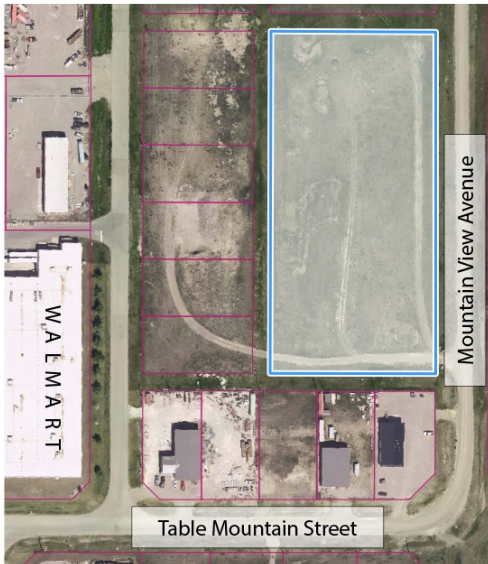
Commercial Real Estate > Commercial Property for Sale







**Location**  
Pincher Creek, Alberta

**Listing ID:**  
26697

**\$278,370**



 PincherCreek  
 Dec 15, 2022  
 (403) 627-3156  
 962 Saint John Avenue Box 159, Pincher Creek , Alberta T0K 1W0

**Zoning**  
I1 - General Industrial and Warehousing

**Legal Plan**  
Plan 0613747 Block 7 Lot 15

**Lot Size (Sq. Ft.)**  
196378

**Lot Size (Acres)**  
4.51

---

Great location behind Walmart! This property is zoned I1 - General Industrial and Warehousing. This zoning can accommodate a wide range of predominantly light industrial and warehousing uses; selected commercial uses; and where possible, other industrial uses which may:

- be considered noxious or hazardous since they involve operations, processes or
- substances which require safety or other precautions;
- require special precautions and/or siting to minimize land use conflicts;
- require exceptionally large lots; or
- require careful consideration because they require services beyond those which are readily available.

Perfect for

- Agricultural/industrial machinery sales, rental and service
- Automotive repair and service
- Fleet and transportation service, major and minor
- Signs
- Vehicle sales and rentals
- Wholesale or storage warehousing

This lot is not serviced

**Disclaimer** - It is your responsibility to perform the appropriate due diligence to verify information provided by users or third parties on this website or in subsequent interactions. For more information see our website's [Terms of Use](#).